



Certificate SGSCH-COC-007157

The Organization

OMNIPACK, S.L.

Carrer Aiguafreda, 34 (Pol. Ind. L'Ametlla Park)
08480 L'Ametlla del Vallès (Barcelona)
Spain

has been assessed and certified as meeting the requirements of

FSC® Chain-of-Custody

The company was assessed against the following standards:
FSC-STD-40-004 Version 3.0 FSC Standard for Chain of Custody Certification - April 2017
FSC-STD-50-001 Requirements for use of the FSC trademarks by Certificate Holders

for the products detailed in the scope below

Compra de papel y cartón FSC 100%, FSC Mix y FSC Recycled para su comercialización, impresión y fabricación de packaging FSC 100%, FSC Mix y FSC Recycled por el sistema de transferencia, con posible subcontratación de impresión y post impresión.

Purchasing of FSC 100%, FSC Mix and FSC Recycled paper for its commercialization, printing and production of FSC 100%, FSC Mix and FSC Recycled packaging products by the transfer system, with possible outsourcing of printing and finished processes.

This certificate is valid from 4 January 2020 until 3 January 2025 and remains valid subject to satisfactory surveillance audits.

Re-certification audit due 60 days prior to expiry date.

Issue 6. Certified since January 2010

Authorised by

SGS Société Générale de Surveillance SA
1, place des Alpes, 1211 Geneva, Switzerland
t +41 (0)22 739-91-11 f +41 (0)22 739-98-86 www.sgs.com

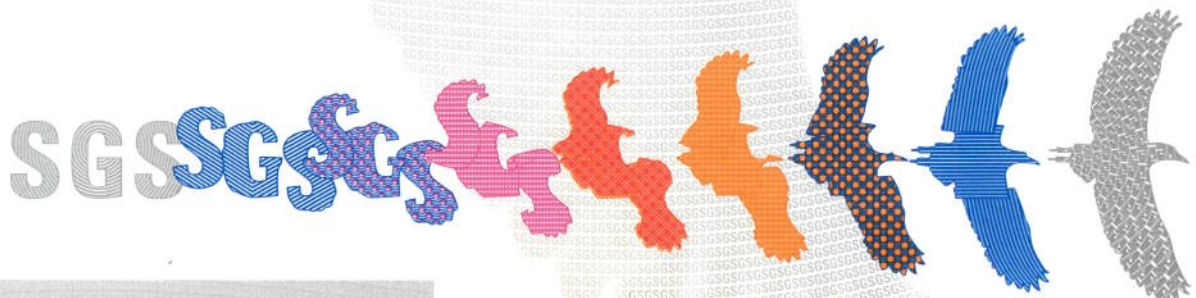
The validity of this certificate shall be verified on <http://info.fsc.org/>
For the full list of product groups covered by the certificate see <http://info.fsc.org/>

This certificate itself does not constitute evidence that a particular product supplied by the certificate holder is FSC-certified (or FSC Controlled Wood). Products offered, shipped or sold by the certificate holder can only be considered covered by the scope of this certificate when the required FSC claim is clearly stated on sales and delivery documents. The certificate remains the property of SGS. The certificates and all copies or reproductions shall be returned or destroyed if requested by SGS.



The mark of responsible forestry

Page 1 of 1



This document is issued by the Company subject to its General Conditions of Certification Services accessible at www.sgs.com/terms_and_conditions.htm. Attention is drawn to the limitations of liability, indemnification and jurisdictional issues established therein. The authenticity of this document may be verified at <http://www.sgs.com/en/certified-clients-and-products/certified-client-directory>. Any unauthorized alteration, forgery or falsification of the content or appearance of this document is unlawful and offenders may be prosecuted to the fullest extent of the law.